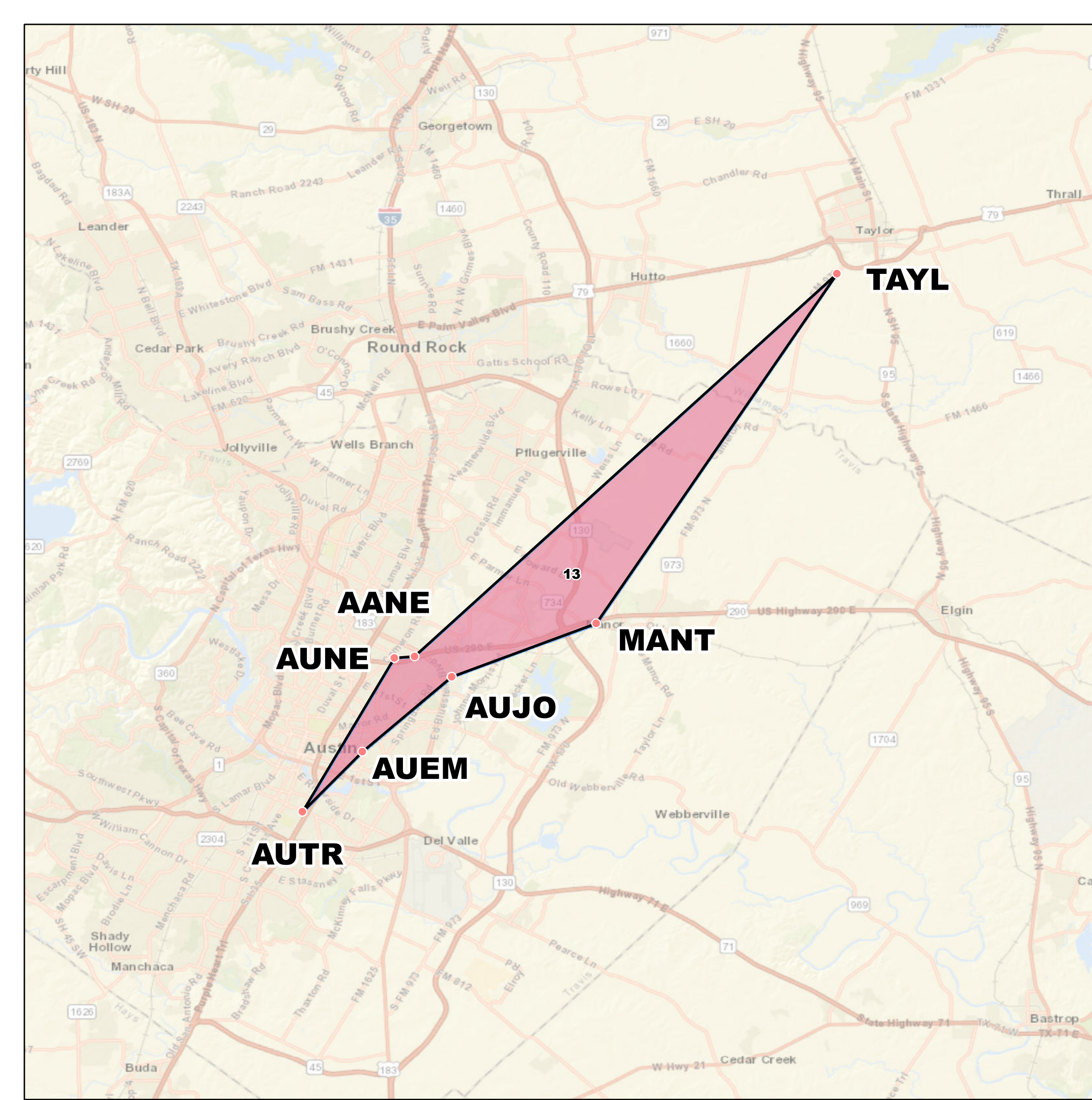
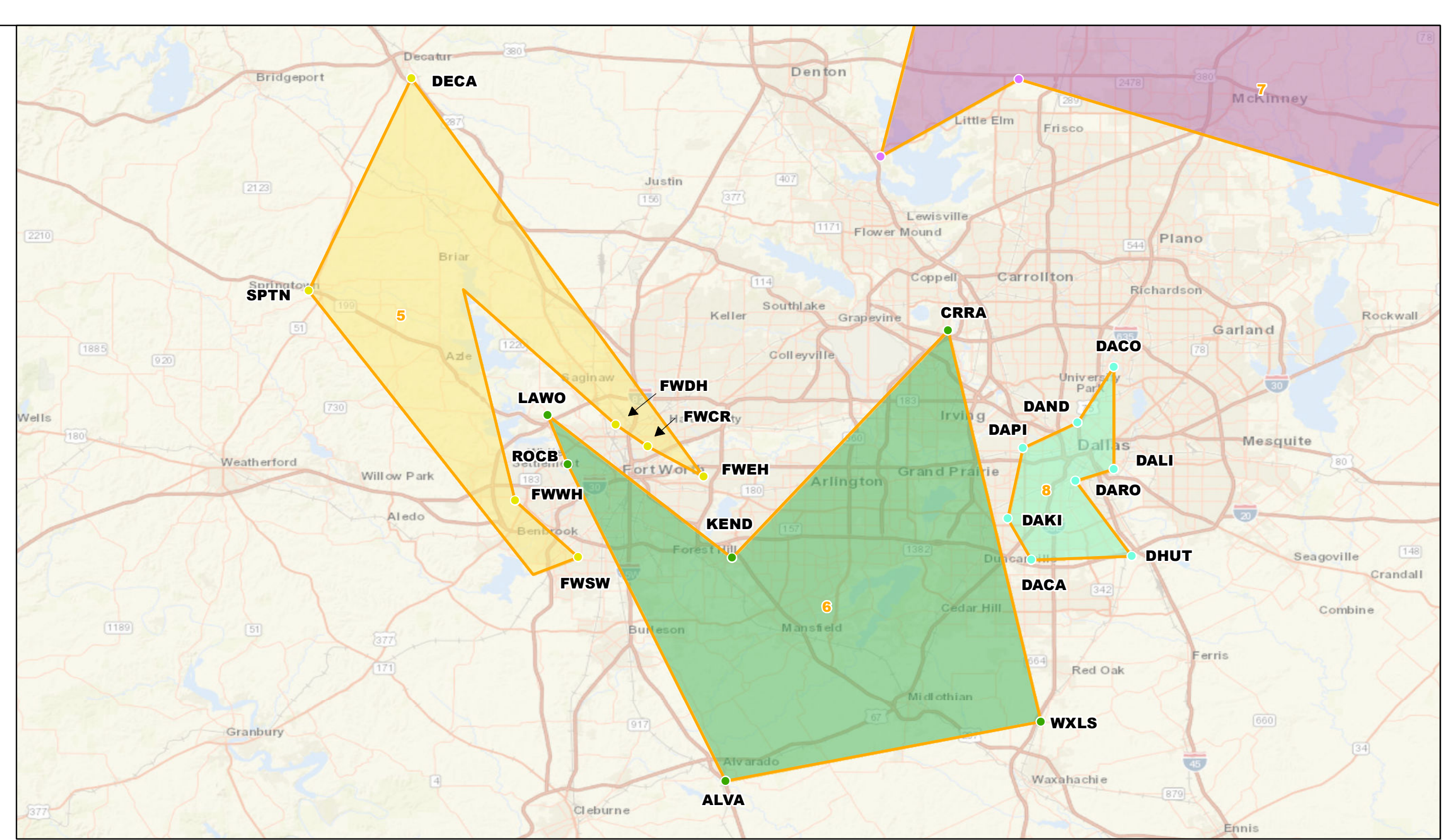
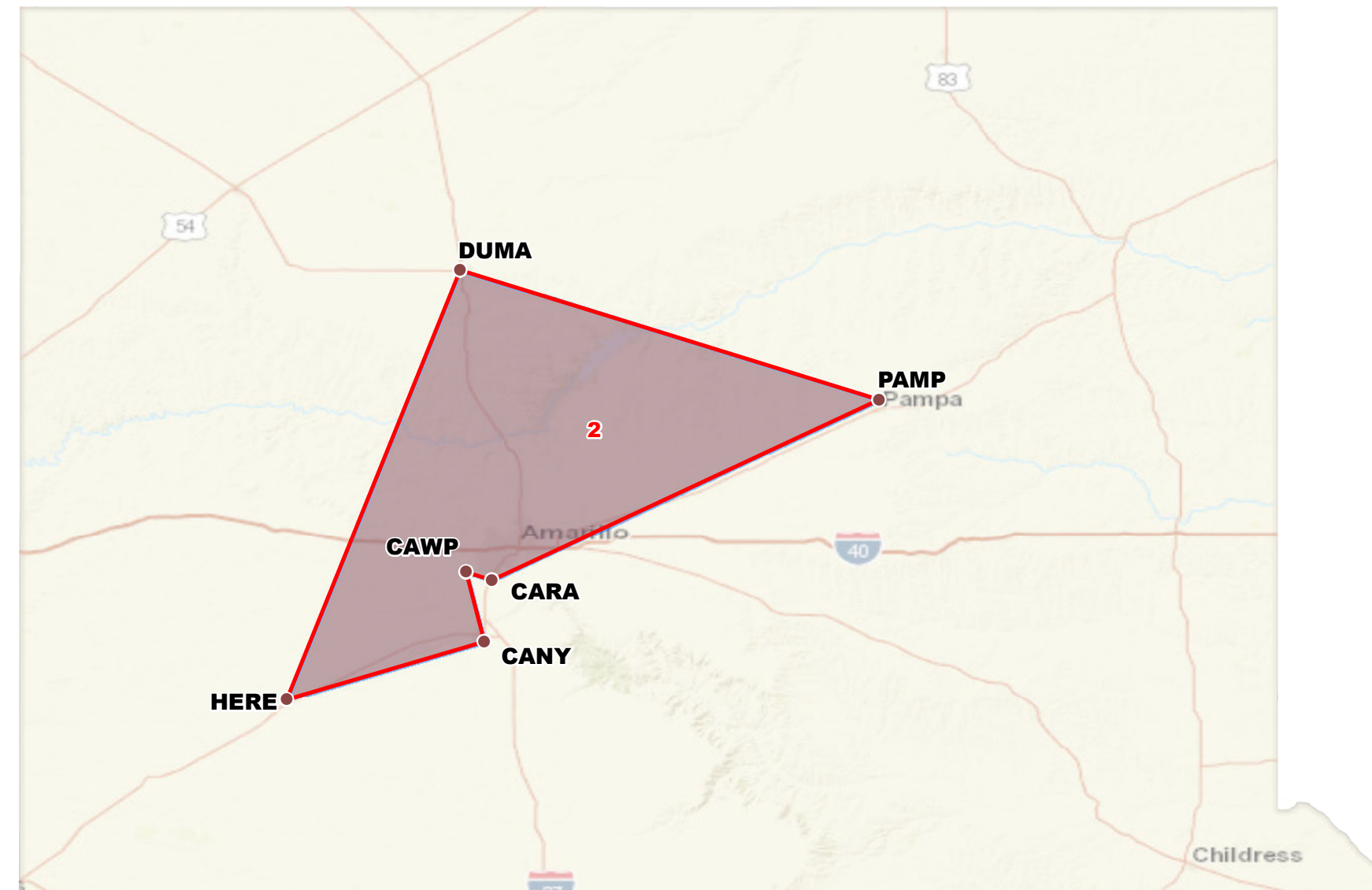


2024-26 - 4A DIVISION 1 FOOTBALL



AUSTIN



DFW

Legend

- Schools

Region 1

- District 1
- District 2
- District 3
- District 4

Region 2

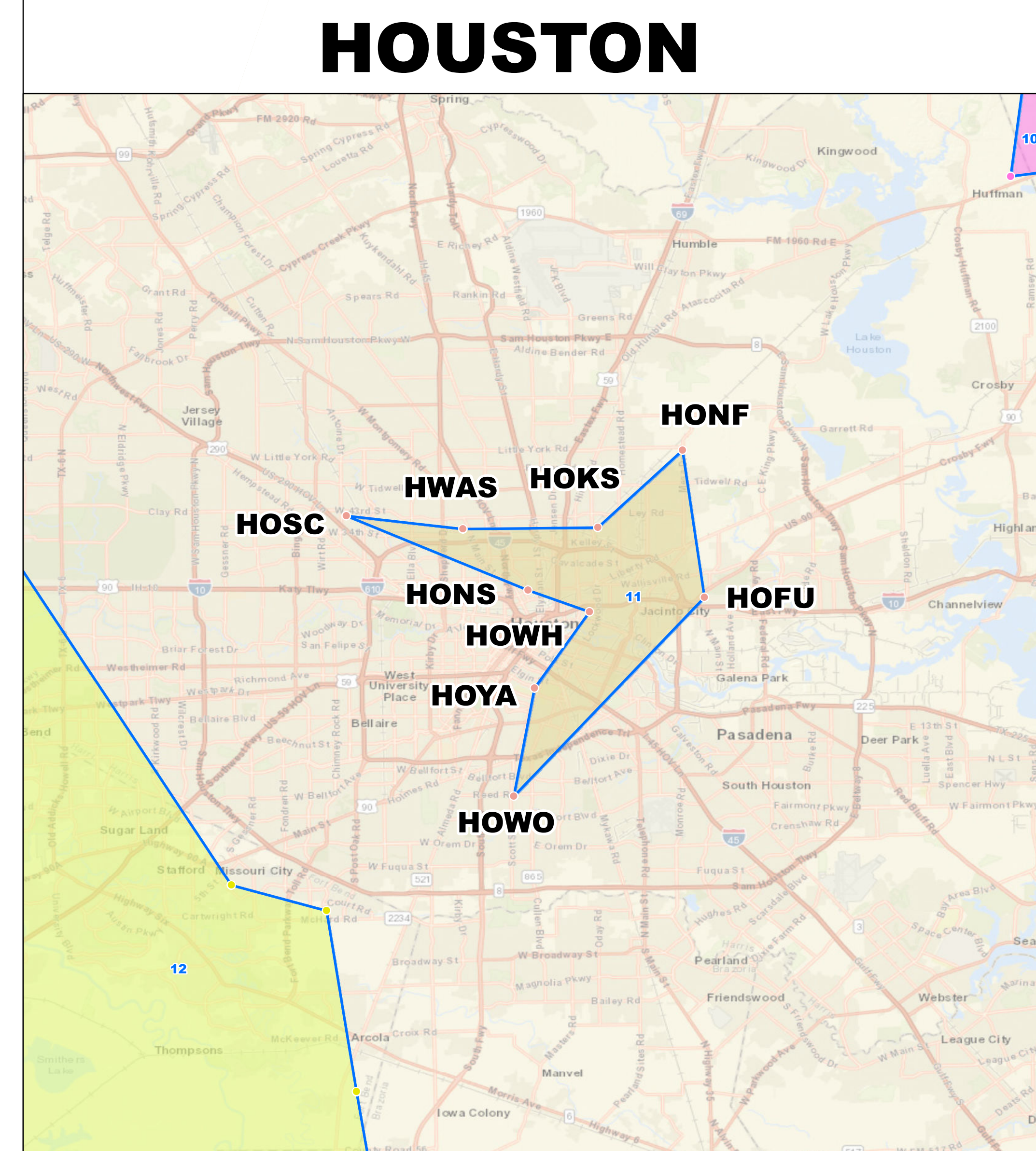
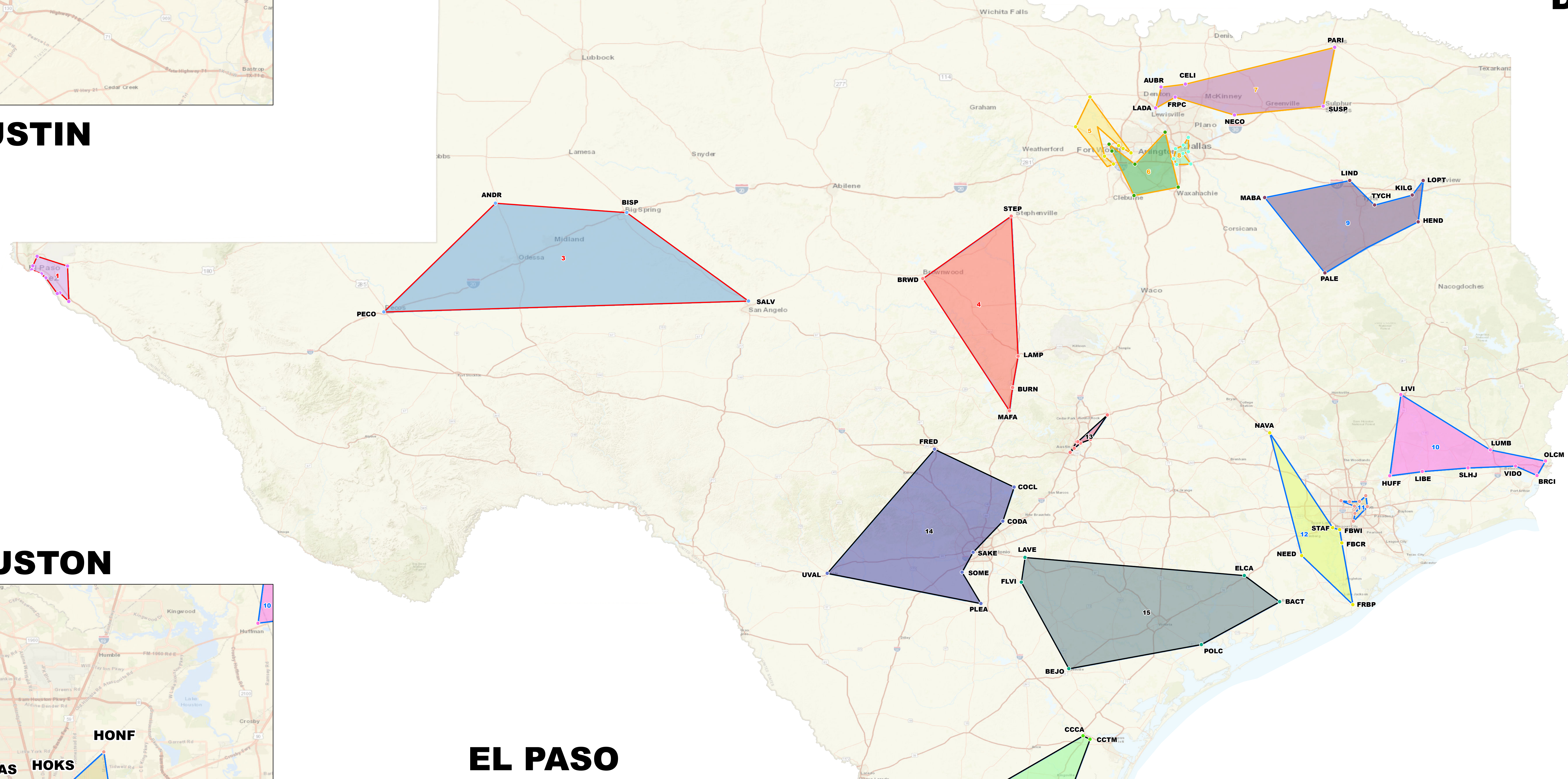
- District 5
- District 6
- District 7
- District 8

Region 3

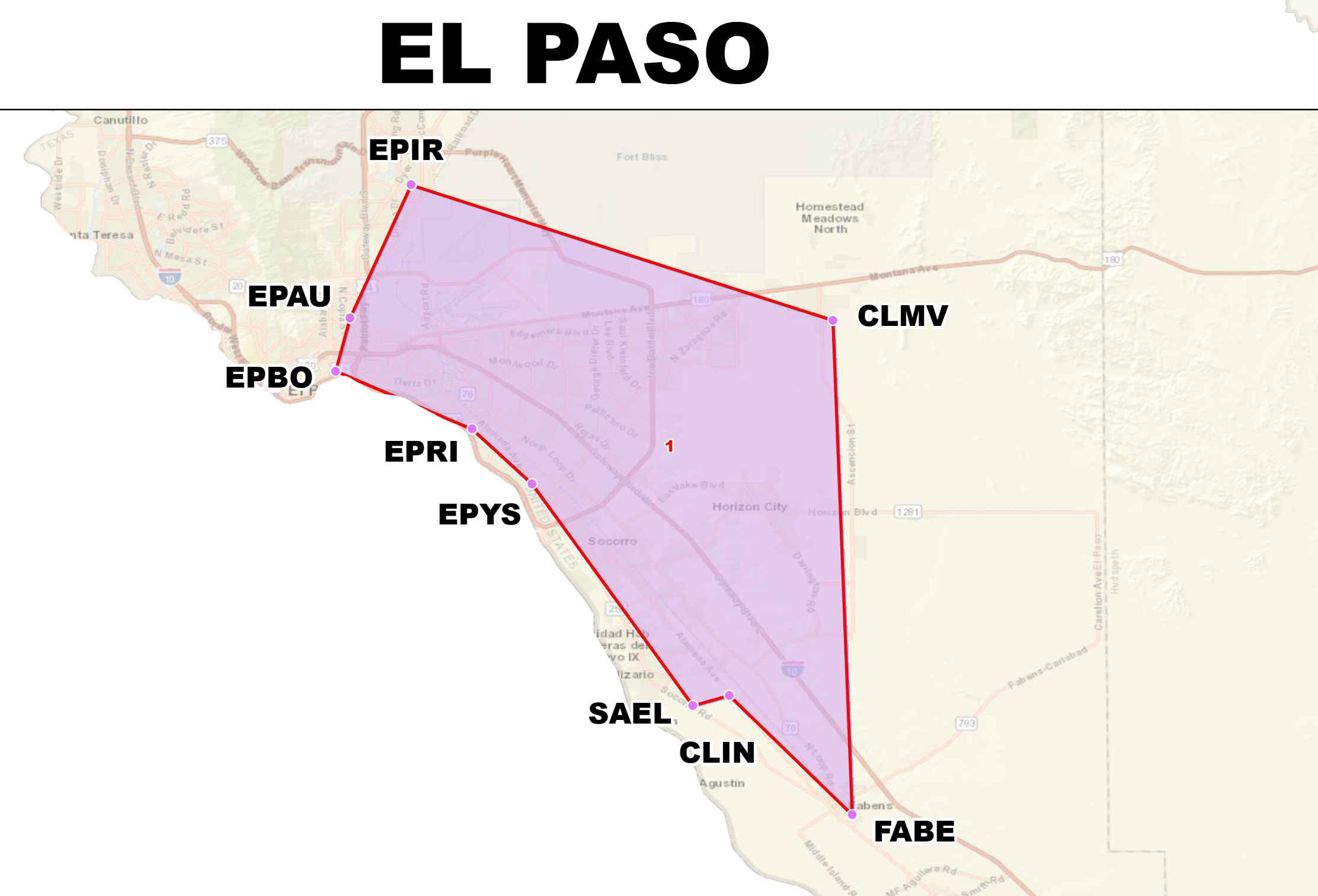
- District 9
- District 10
- District 11
- District 12

Region 4

- District 13
- District 14
- District 15
- District 16



HOUSTON



EL PASO

REGION 1	REGION 2	REGION 3	REGION 4		
DIST	LABEL	SCHOOL	DIST	LABEL	SCHOOL
1	CLIN	CLINT	13	AANE	AUSTIN ACHIEVE
	CLMV	CLINT MOUNTAIN VIEW		AUEN	AUSTIN EASTSIDE
	EPAU	EL PASO AUSTIN		AUJO	AUSTIN JOHNSON
	EPBO	EL PASO BOWIE		AUNE	AUSTIN NORTHEAST
	EPRI	EL PASO RIVIE		AUTR	AUSTIN TRAVIS
	EPYS	EL PASO RIVERSIDE		MANT	MANOR NEW TECH
	FABE	FABENS		TAYL	TAYLOR
2	CANY	CANYON	14	CCOA	COMAL CANYON LAKE
	CAMP	CANYON RANDBALL		CCDA	COMAL DAVENPORT
	CAWP	CANYON WEST PLAINS		FRED	FREDERICKSBURG
	DUMA	DUMAS		LIBE	LIBERTY
	HERE	HEREFORD		LOFT	LODGEVIEW PINE TREE
	PAMP	PAMPA		COCK	COMAL COUNTY LAKE
	ANDR	ANDREWS		HUFF	HUFFMAN HARGRAVE
3	BISP	BIG SPRING	15	TYCH	TYLER CHAPEL HILL
	SALV	SAN ANGELO LAKE VIEW		BIKE	BRIDGE CITY
	BRWD	BROWNWOOD		HUFF	HUFFMAN HARGRAVE
	STEP	STEPHENVILLE		LIBE	LIBERTY
	LAMP	LAMPASAS		LOFT	LODGEVIEW PINE TREE
	MAFA	MARBLE FALLS		COCK	COMAL COUNTY LAKE
	MABA	MARBLE FALLS		CCOA	COMAL CANYON LAKE
4	CELJ	CELINA	16	CCOA	COMAL CANYON LAKE
	FRPC	FRISCO PANTHER CREEK		CCDA	COMAL DAVENPORT
	LADA	LAWDARS		FRED	FREDERICKSBURG
	NECO	NEVADA COMMUNITY		LIBE	LIBERTY
	PARI	PARIS		LOFT	LODGEVIEW PINE TREE
	SUSP	SUBSTITUTION		COCK	COMAL COUNTY LAKE
	WAXH	WAXAHACHE		CCOA	COMAL CANYON LAKE



Mapping and GIS Services provided by:
Disclaimer: This product is offered for informational purposes and may not have been prepared for or be suitable for legal, engineering, or surveying purposes. It does not represent an on-the-ground survey and represents only the approximate relative location of property, governmental and/or political boundaries or related facilities to said boundary. No express warranties are made by Quiddity Engineering concerning the accuracy, completeness, reliability, or usability of the information included within this exhibit.



1701 Manor Road
Austin, Texas 78722
512-471-5883
www.utl-texas.org